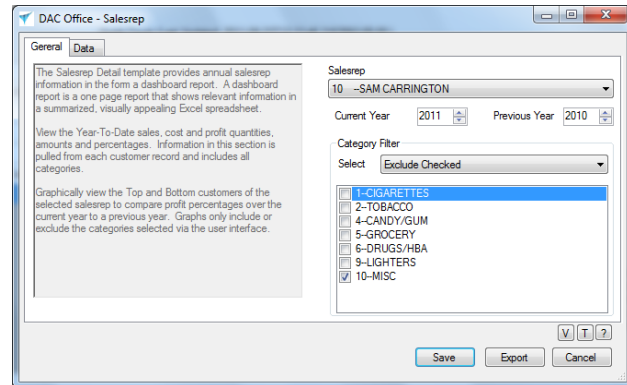


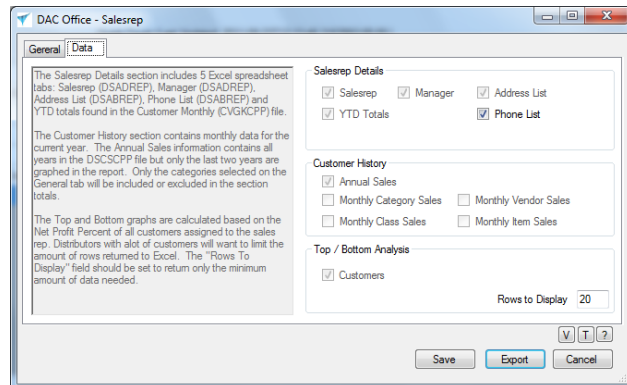
Overview

The Salesrep Detail report is a one page dashboard style report that displays all information related to the selected salesman. Select the salesman from the drop-down list box. Select two years to compare. Choose the categories to include or exclude in the report. Save your changes so that you won't have to select them again next time you open this report.



Selected Data

Check off the data to export to Excel. Mandatory data is grayed out and can't be unselected. Select only the data you need so that the report runs faster. Enter the number of rows to display in the Top/Bottom Analysis section. The report graphs the 6 most profitable and least profitable customers, so the Rows to Display field should contain at least 6. Entering a value more than 20 could really slow things down.



Exported Report

Click on the Export button to create the multi-spreadsheet linked files in Excel. The "C:\DACOffice\DACSalesrepDetail.xlsx" file contains the raw DAC data. The "C:\DACOffice\DACTSalesrepDetail.xlsx" contains the dashboard report. This report will be changed to a single, stand-alone dashboard report in the upcoming months.

